

CERTIFICATE OF LOCATION OF GOVERNMENT CORNER

NORTHEAST Corner of Section 17, Township 107N, Range 39W

5th Principal Meridian, State of Minnesota, County of MURRAY

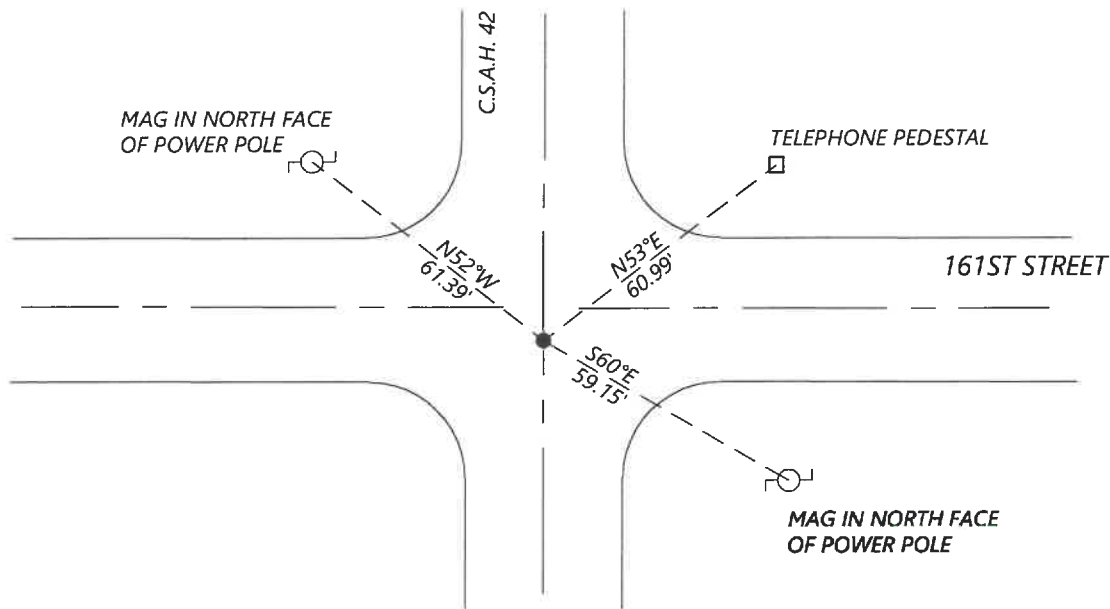
At the corner location shown on the sketch:

On 8/27/2020 found a NO. 4 REBAR WITHOUT CAP FLUSH WITH ASPHALT
DATE

left monument as found lowered monument removed monument (explain)

On _____ placed a _____
DATE

SKETCH OF REFERENCE TIES



N.T.S.

Statement of evidence for this corner location is on back of this page.

I hereby certify that this document was researched and prepared by me or under my direct supervision and that I am a licensed Land Surveyor under the laws of the State of Minnesota.

Signature [Handwritten Signature]

Date 6/16/2021 License No. 45874

Title:

- Land Surveyor Professional Engineer
- County Surveyor County Engineer

OFFICE OF THE COUNTY RECORDER

County of Murray

I hereby certify that this document was filed in the Co.

Recorder's office at _____ M. on the _____ day of _____ A.D. 20

County Recorder Karen Brown

by JUN 22 2021, Deputy

DOCUMENT NO. _____

Statement of Evidence:

Northeast Corner of Section 17, Township 107 North, Range 39 West, 5th Principal Meridian, Murray County, Minnesota.

No GLO notes found.

1901 *May, Survey record for Section 17 shows a stone and pits at the corner.*

1978 *April, Highway Department records show that they dug with a backhoe and found nothing.*

1999 *May, CSAH 42 plans show the corner at PI station 3+222.686*

2000 *March, Highway Department records show that a $\frac{3}{8}$ " rebar was set with the following ties:*

<i>Nail & cap</i>	<i>SW</i>	<i>58.20'</i>		
<i>X on tele ped</i>	<i>NE</i>	<i>61.40'</i>		
<i>Nails</i>	<i>W</i>	<i>145'</i>	<i>245'</i>	<i>340'</i>

2017 *May, Highway Department records show that a No. 4 rebar was located with the coordinates:
N: 184606.71 E: 558828.06*

2019 *December, A survey in Section 9 by Jesse Zieg shows that a $\frac{1}{4}$ " rebar was found at the corner. He shows a distance of 2636.60ft to the South Quarter corner.*

2020 *September, Westwood Professional Services searched and found a No. 4 rebar at the corner. The coordinates fit the 2017 Highway Department records and 2019 survey. I accepted the found monument and set reference ties.*

Analysis of the recovered data, field evidence and survey measurements, indicates that the monument found is the correct perpetuation of this corner. For additional information concerning this corner please contact Westwood Professional Services.